



**Aldreds**  
Estate Agents

7 Monckton Avenue

Oulton Broad, Lowestoft, NR32 3EG

Offers Over £250,000



## 7 Monckton Avenue

Oulton Broad, Lowestoft, NR32 3EG

Aldreds are delighted to offer this three bedroom 1930's semi detached house situated in this very desirable cul-de-sac location on the fringe of North Oulton Broad being within walking distance of Normanston Park and the Broads National Park. This superb family home has been very well extended creating a large extended garden room to the rear which has the potential to turn into an open plan kitchen/diner. The spacious accommodation includes a wide entrance hall, a spacious lounge/diner which leads into the garden room, a modern fitted kitchen. On the first floor there are three bedrooms and a family bathroom. To the outside of the property there is a front driveway providing off road parking and to the rear there is a spacious lawned garden with private rear and side aspects. This superb family home is presented to a good standard throughout and benefits from gas central heating and uPVC double glazing. Homes in this desirable cul-de-sac location rarely become available and an early viewing is strongly recommended.

### Entrance Hall

Upvc entrance door, stairs leading to first floor, radiator, cupboard with electric meters and fuse box, cupboard housing modern gas combination boiler,

### Kitchen

6'4" x 13'7" (1.94 x 4.15)

Ceramic tiled floor, range of modern fitted kitchen units, stainless steel single sink with drainer, power points, recess & plumbing for dishwasher & washing machine, Bosch 4 burner stainless steel gas hob with concealed extraction filter hood, double oven/grill, space for fridge/freezer, part vaulted ceiling with velux window, Upvc window, and Upvc door.

### Lounge/Diner

#### Lounge Area

10'5" x 11'10" (3.19 x 3.63)

Fitted carpet, power points, T.V point, radiators, Upvc bay window, Fireplace

#### Dining Area

9'10" x 17'11" (3.02 x 5.48)

Fitted carpet, power points, skylight window, Upvc double doors leading to garden room/sitting room.





### Garden Room/Sitting Room

16'3" x 8'0" (4.96 x 2.44)

Fitted carpet, power points, Upvc windows, radiators, Patio doors leading to rear garden.

### First Floor

Upvc window, loft access leading to insulated loft space.

### Master Bedroom

10'9" x 12'4" (3.28 x 3.77)

Stained floorboards, Upvc bay window, radiator, power points.

### Bedroom 2

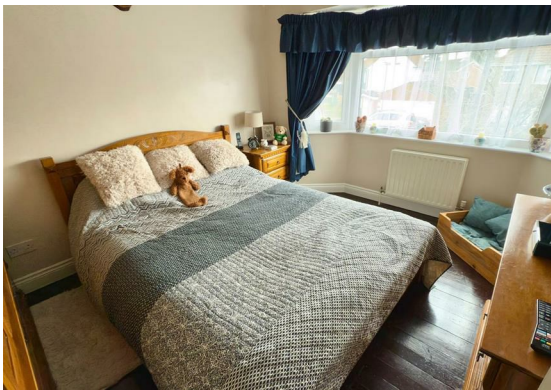
9'9" x 12'2" (2.98 x 3.73)

Fitted carpet, Upvc window, power points, radiator.

### Bedroom 3

6'4" x 7'4" (1.95 x 2.24)

Fitted carpet, Upvc window, power points, radiator.



### Family Bathroom

Bathroom suite comprising of a P shaped bath with hot and cold mixer, thermostatic shower unit, glass curved shower screen, vanity sink, low level W.C with concealed cistern, fully tiled walls, chrome towel rail/radiator, Upvc window.

### Outside To The Front

There is garden laid to lawn with shrub borders, car standing space. There is a side gate providing access to rear garden.



### Outside To The Rear

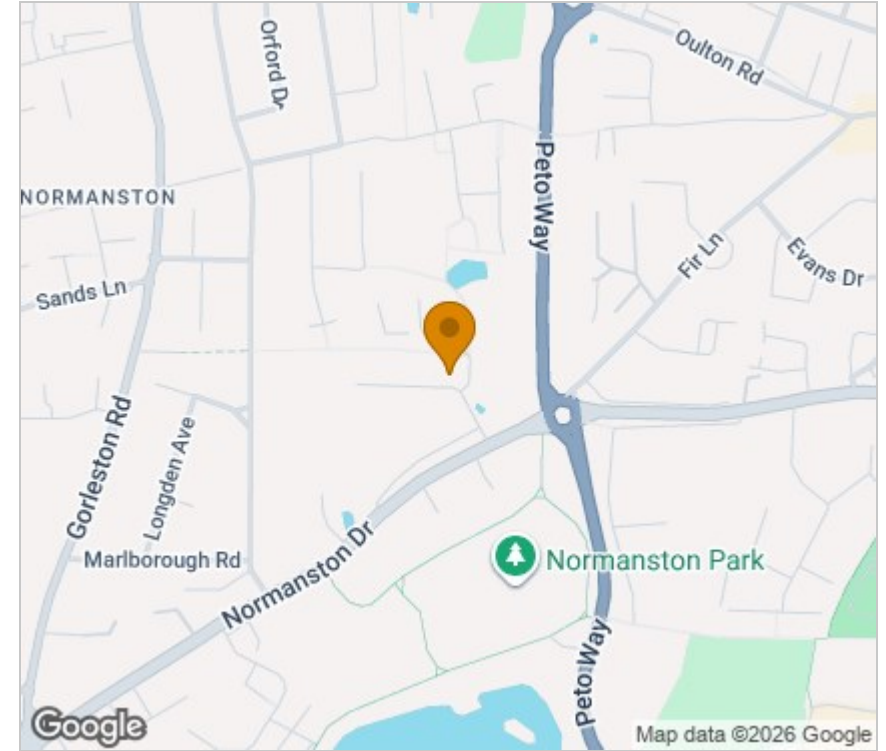
There is a well presented rear garden laid to lawn, patio seating areas, concrete pathways, flower and shrub borders, 2 x timber and felt garden stores.

Ref: L2289/02/25

## Floor Plan



## Area Map



## Viewing

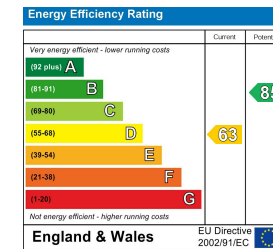
Please contact our Aldreds Lowestoft Office on 01502 565432 if you wish to arrange a viewing appointment for this property or require further information.

### Disclaimer

These particulars are issued on an understanding that all negotiations shall be conducted through Messrs. Aldreds. Please note: Messrs. Aldreds for themselves and for the vendors or lessors of this property whose agents they are given notice that: 1. Particulars are set out as a general outline only for guidance of intending purchasers or lessees, and do not constitute nor constitute part of, an offer or contract. 2. All descriptions, dimensions, references to condition and necessary permissions for use and occupation, and other details are given without responsibility and any intending purchasers or tenants should not rely on them as statements or representations of fact but must satisfy themselves by inspection or otherwise as to the correctness of each of them. 3. No person in the employment of Messrs. Aldreds has any authority to make or give any representation or warranty whatever in relation to this property. 4. If you are proposing to visit the property and are travelling some distance please check with Aldreds on the issue of availability prior to travelling. 5. Aldreds Property Consultants and associated services may offer additional services to the prospective purchaser for which they will be entitled to receive a commission.

Aldreds are pleased to be working with Mortgage Advice Bureau. They're an award-winning mortgage broker with over 1,400 advisers across the UK, and have access to over 12,000 mortgage products from over 90 lenders. Aldreds Estate Agents Ltd receive a commission of £200 on each completed case. Your home may be repossessed if you do not keep up repayments on your mortgage. There may be a fee for mortgage advice. The actual amount you pay will depend upon your circumstances. The fee is up to 1%, but a typical fee is 0.3% of the amount borrowed. Mortgage Advice Bureau is a trading name of Mortgage Seeker Limited which is an appointed representative of Mortgage Advice Bureau Limited and Mortgage Advice Bureau (Derby) Limited which are authorised and regulated by the Financial Conduct Authority. Mortgage Seeker Limited Registered Office: Lovewell Blake, Sixty Six North Quay, Great Yarmouth, Norfolk, NR30 1HE. Registered in England Number: 03721415. 6. Potential purchasers should check with their providers that the broadband and mobile phone coverage they would require is available.

## Energy Efficiency Graph



143 London Road North, Lowestoft, Suffolk, NR32 1NE  
Tel: 01502 565432 Email: lowestoft@aldreds.co.uk <https://www.aldreds.co.uk/>

Registered in England Reg. No. 08945751 Registered Office: 66 North Quay, Great Yarmouth, Norfolk NR30 1HE Directors: Mark Duffield B.S.c. FRICS. Dan Crawley MNAEA Paul Lambert MNAEA